

# le feu<sup>By Lauritsen</sup>

D E F I N E F I R E



# le feu<sup>By Lauritsen</sup>

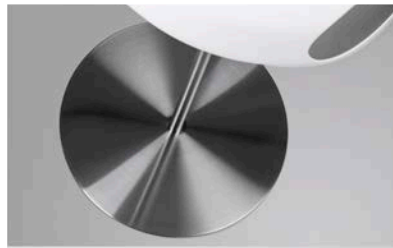
Le Feu is a Danish company established in 2017, which produces beautiful, contemporary fireplaces that are portable and eco-friendly. Le Feu provides a lifestyle collection, which combines an effective functional heating solution, with stunning choices of size and style for both indoor and outdoor living spaces.

**“Hygge”** - the Danish concept of creating warmth, connection and wellbeing is captured through the beauty of Le Feu fireplaces

Le Feu fireplaces features timeless Scandinavian design using the finest materials creating a highly functional solution to replace the traditional fireplace.

The beautiful smoke-free fireplaces from Le Feu require no ventilation and run purely on biofuel, making them clean and environmentally friendly as the flame radiates warmth and comfort throughout the room.

The classic simplicity of the collection offers smooth surfaces and stunning clean lines. The four models create a unique, flexible and practical heating solution for radiating warmth throughout a room.







## LE FEU WALL - NEW ARRIVAL 2020

A new Le Feu model was born. Le Feu - Wall is the latest addition to the wide collection of different models that Le Feu offers. The new model does not take up any space from the current decoration of your home, and might just be the final touch that makes your room unique and complete.

Le Feu - Wall comes with a wall mount, designed specially for Le Feu fireplaces. You can turn the fireplace 90 degrees both sides, making it possible to adjust where you want see the flames from and where you want the heat to go.

The elegance of the design, the clean lines and living flames make the Le Feu Fireplaces the crown jewel of the room.

\*Le Feu - Wall can only be applied on brick and concrete walls.







## LE FEU SKY

SKY is the best-selling Bio Fireplace in Scandinavia. Sky is characterized by its unique ceiling suspension, which makes the fireplace look bright and elegant. With its elliptic dome, it merely floats in the air as it radiates a soft warmth, contributing to a cozy and relaxed atmosphere. SKY offers a unique opportunity to turn the beautiful blazing flames into an integral part of the home decor while decorating the room with a stylish design. If you are looking for a straightforward and eye catching piece that does not take up floorspace, SKY is certainly the fireplace for you.







# FAKTEN VON LE FEU BIO ETHANOLKAMIN

## HOW TO INSTALL LE FEU FIREPLACES ?

LE FEU fireplaces comply with European Standards are very easy to install and ready to use. Each model is complete with installation and set up guides. The LE FEU Fireplaces require no flue or chimney. LE FEU SKY model is a ceiling hanging fireplace and a comprehensive guide is provided with each fireplace supplied with fixing recommendations

## ARE THERE ANY HARMFUL EMISSIONS?

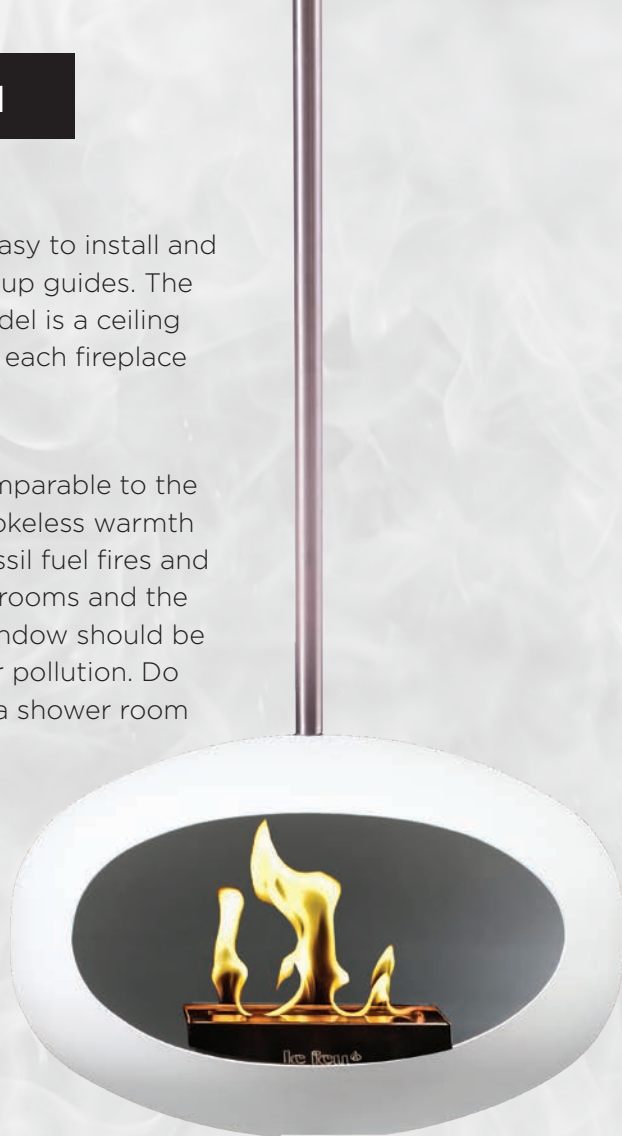
The amount of CO<sub>2</sub> produced by the fireplace is small and comparable to the level emitted by a candle. Bio ethanol fuels produce clean, smokeless warmth without the harmful emissions produced from conventional fossil fuel fires and wood burners. We recommend if the fireplace is used in small rooms and the burner is set to maximum adjustment, that the door(s) or a window should be opened to allow for air circulation and guard against indoor air pollution. Do not use an unvented appliance in a room(s) used for sleeping a shower room or bathroom.

## DO BIO-ETHANOL FIRES PROVIDE HEAT?

LE FEU fireplaces are engineered and designed to allow the specially created dome to deliver beautiful ambient heat. The fireplaces produce approximately 2.0 to 3.0kw of heat which is equivalent to a small gas or electric heater. 2.0 to 2.5kw output of heat approximately heats a 20 square metre room.

## FOR HOW LONG DOES THE BIO ETHANOL FIREPLACE BURN?

The duration is dependent on the burner setting used and conditions of the climate. In areas of high air current the duration may be reduced. It is estimated 1.5 litre of fuel may last for up to 5 to 6 hours subject to conditions.





le feu

## GROUND WOOD

Ground Wood is inspired by nature and is an elegant and eco friendly bio ethanol tripodfireplace. Ground Wood is supported by smooth Danish hand crafted legs in optional Wenge, Ash or Oak hardwood finishes, adding a distinctive style to the warmth and ambiance created by the fireplace dome. The dome finished in smooth matt black enhances the stunning glow from the flame radiating an efficient heat to create warmth and comfort in living areas throughout your home.

Wengé

Oak

Ash







## GROUND STEEL

In keeping with Le Feu bio-ethanol fireplaces' user-friendly approach to assure endless pleasure. GROUND STEEL requires no chimney or flue and is easy to install ready for your immediate enjoyment. Scandinavian inspired designers combine precision engineering to create an elegant modern fireplace in stunning chrome finish resulting in a form of beauty.

Consists of a dome, a burner and a Baseplate Ø 450 x 5 mm made of cold rolled steel with powder lacquered or in brushed stainless steel. Together a 25 mm x 800 mm stainless steel tube with one outside M10 bolt and one inside threads for the M10 bolt.





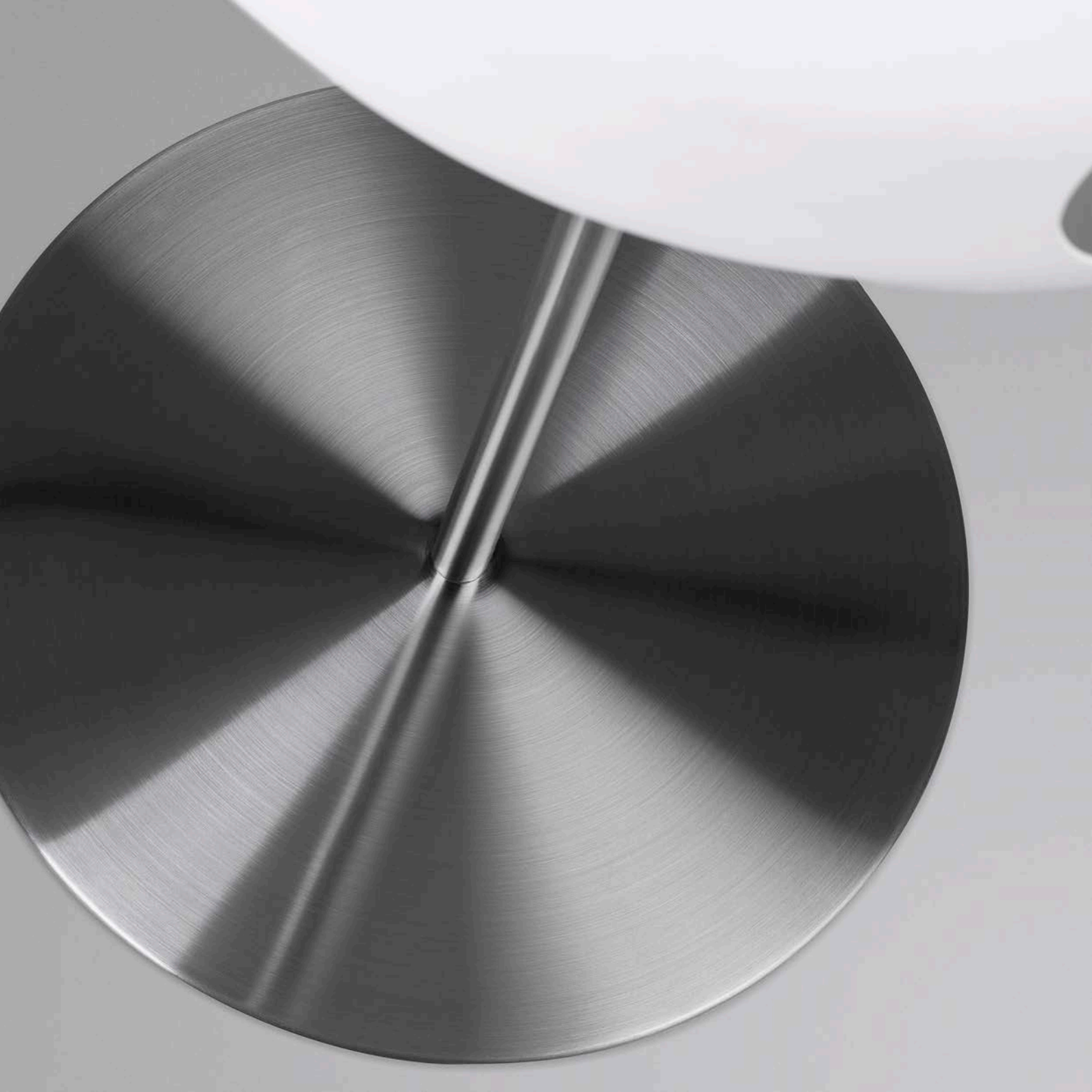
le feu

## GROUND STEEL - WHITE

GROUND STEEL White is a stunning new design, a stylish bio fuel fireplace featuring rolled stainless steel stand with attractive base plate. The white design enhances and augments the stunning glow of the flame and quickly radiates an efficient heat to create warmth and comfort removing the chill from cold living areas at home.







## GROUND LOW

Ground Low legs is only 45 cm, are is perfect for the terrace and the small apartments. The three floor standing models GROUND WOOD, GROUND LOW and GROUND STEEL are light and portable, easy to move around the home as well as to an outdoor patio or decking. The soft dancing smoke-free flame from our fireplaces creates a beautiful atmosphere.

Our ground steel, ground wood and sky model provide a unique 3 in 1 user selectable option. The flexibility to inter-change and swap the wooden leg supports and modify the fireplace to use either the floor stands or ceiling pole, is an alternative display option. Additional accessories are available as a separate purchase accessory.

Ash



Oak



Wenge



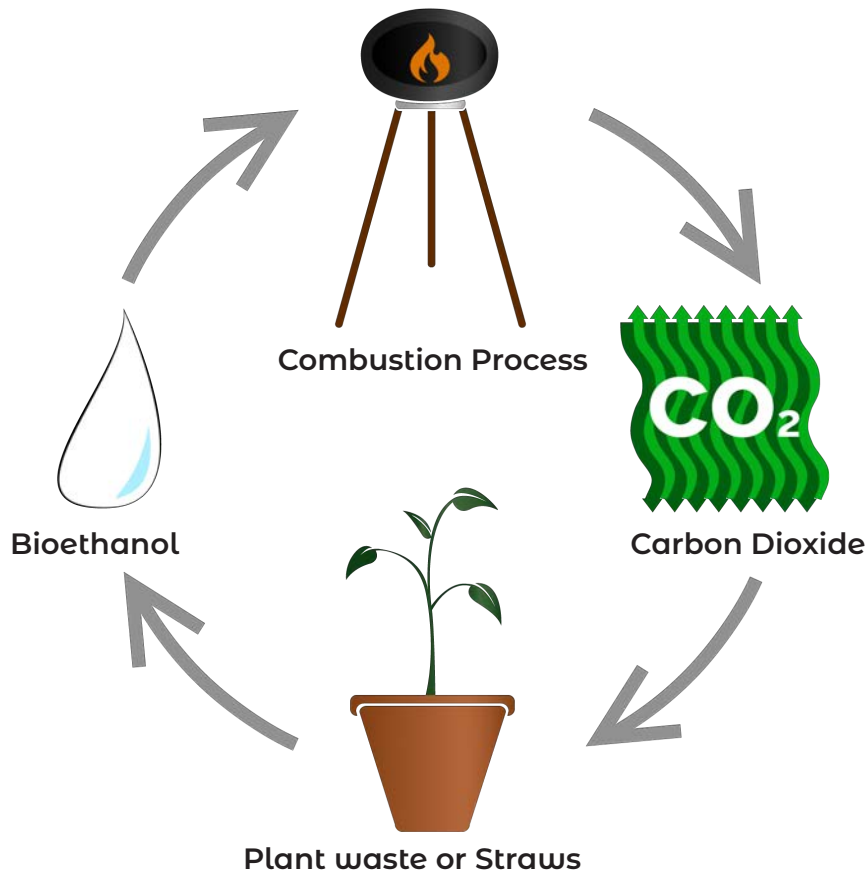




le feu

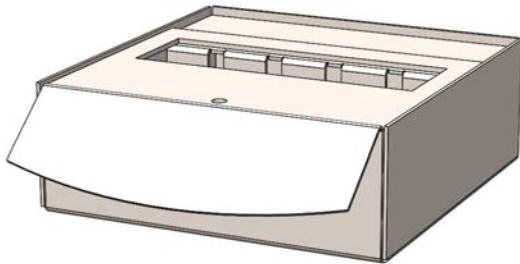
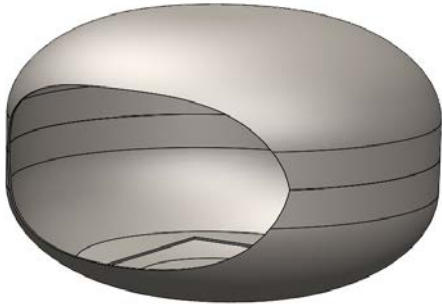
## WHAT IS BIOETHANOL

The fireplaces burn clean on bioethanol, which is alcohol produced by biomass to be used as fuel and has a clean combustion. The alcohol is produced by a sugar starch that usually comes from two different sources. 1. Generation bioethanol made of “edible” plants and 2nd generation bioethanol made from plant waste or straw. Through a fermentation process, you utilize the starch in the biomass, which is converted into bioethanol. Biofuels are a great environmentally friendly alternative to traditional solutions, because of its renewability and CO<sub>2</sub> neutrality.





## SPECIFICATIONS



**CERTIFICING**

DS/EN 16647:2015

### **DOME**

The dome is made in 2.3 mm. Cold-rolled steel in dimensions 520 \* 350 mm. Round base plate in 5 mm for mounting the selected model and an enclosure plate for burner in 3 mm. Powder coated with high temperature paint.

Weight 14.3 kg.

### **BURNER**

Burner made of 2 mm SS304 brushed steel in dimensions 200 x 200 x 75 mm. Front logo plate made of 1.4 mm SS304 brushed steel with engraved logo. And a top plate to control the fire of 3 mm SS304 brushed steel plate.

Weight 4.8 kg.

LE FEU fireplaces complies with the European Standard. The products are tested carefully so that they meet the strictest prevailing safety requirements. The emissions of carbon dioxide and water vapour from LE FEU products are under the strictest limit values, which guarantee safe and secure ownership.



D E F I N E F I R E